

Appendix B – Public Involvement Synopsis

Public Involvement Synopsis

Job Number 090069
Northwest Arkansas Regional Airport (XNA) Access
Benton County
Thursday, December 5, 2019

An open-forum Public Involvement Meeting for the proposed project was held at Trinity Grace Church, 5845 S. Bellview Road in Rogers, from 4:00 – 7:00 p.m. on Thursday, December 5, 2019. In addition, a Public Officials Meeting was held at 3:00 p.m. at the same location. Special efforts to involve minorities and the public in the meeting included the following:

- Display advertisement placed in the *Northwest Arkansas Democrat Gazette* newspaper on Sunday, November 17, 2019 and Sunday, December 1, 2019. Display advertisement also placed in the *La Prensa Libre* newspaper on Thursday, November 21, 2019 and Thursday, December 5, 2019.
- Outreach letters mailed to Elected Officials, Property Owners and Churches.
- Outreach documents emailed to XNA Board.
- Email invitation sent to Community Stakeholders.
- Northwest Arkansas Regional Planning Commission sent notice to Technical Advisory Committee & Transportation Policy Committee
- Public Meeting Notice Flyer posted to ARDOT website, XNA Project website and social media websites such as XNA Facebook and XNA Twitter.
- ARDOT News Release published on Thursday, November 21, 2019.
- XNA Media release sent to media list.

The following information was available for inspection and comment:

- Displays including 4 identical copies of aerial photograph roll plots at a scale of 1-inch equals 528 feet.
- Exhibit board displaying the history of the project.

Handouts for the public included a summary sheet, comment form, online comment form flyer and a small-scale map illustrating the project location, which was identical to the aerial photograph display. Copies of the handouts are attached.

Table 1 describes the results of the public participation at the meeting.

Table 1	
Public Participation	Totals
Attendance at Public Officials Meeting (including staff)	27
Attendance at Public Involvement Meeting (including staff)	169
Comment forms / emails received	83
Letters received	5

Garver staff reviewed all comments received and evaluated their contents. The summary of comments listed below reflects the personal perception or opinion of the person or organization make the statement. The sequencing of the comments is random and is not intended to reflect importance or numerical values. Some of the comments were combined and/or paraphrased to simplify the synopsis process.

An analysis of the responses received as a result of the public survey is shown in Table 2.

Table 2	
Survey Results	Totals
Supports improved connectivity	73
Does not support improved connectivity	6
Improvements will impact property/community	59
Improvements will not impact property/community	18
Prefers New Location Alternative	61
Prefers to Improve Existing Alternative	13
Prefers Partial New Location Alternative	9
Prefers No Build Alternative	2
Suggested improvements to proposed project/alternatives	30
Knew of environmental issues in immediate proposed alternative areas	18
Made additional comments	36

The following is a general listing of comments associated with this project:

Reasons for supporting improved connectivity:

- Current route (Highway 112.) always subject to traffic congestion (14)
- Improved connection will be more direct to XNA (10)
- Current route to XNA is dangerous (7)
- Current route to XNA is too slow and difficult (4)
- Current route (612 to 112 to 264) to XNA can be confusing to visitors due to many twists and turns.
- Growing population of Northwest Arkansas requires improvements of area to reduce congestion.
- Southern entrance to XNA subject to flooding.

Suggestions for improving proposed project/alternatives:

- Expand Highway 112 (8)
- Implement four-lane divided highway (5)
- Move new location north of Harden Road and Holmes Road intersection (3)
- Create exchange between future bypass and Robbins Road (3)
- Pave Wager Road leading to Snavely/ Hendrix (2)
- Do not implement stop signs/stop lights but reduce speed limit to 65mph (2)
- Connect new road to Bella Vista Bypass
- Implement lights at intersections

Environmental Issues in immediate area of any proposed alternatives:

- Run-off will flood Spring on Holmes Road (6)
- Original route subject to blind cavefish (3)
- Small cemetery on Colonel Meyers Road and Wager Road (3)
- "Improve Existing" route passes through Cave Springs (3)
- Eagles, blue herons and buzzards reside along Osage Creek (2)
- Wildlife sanctuary located at intersection of New Location and Little Osage (2)
- New 612 bypass will cause drainage and flooding issues

General Concerns:

- Widening road will cause more construction at intersection of New Location
- Traffic
- Accidents due to speeding and construction

Attachments:

- Public handouts, including blank comment form
- Small-scale display copy

Northwest Arkansas Regional Airport (XNA) Access Study

Job 090069



Background

The Arkansas Department of Transportation (Department) has contracted with Garver to perform an Environmental Assessment for a connector road to the Northwest Arkansas Regional Airport (XNA). The scope of work also includes roadway and bridge design plans for the alignment, which will be determined through the Environmental Assessment process.

The purpose of the proposed project is to provide a highway connection for the reliable and efficient movement of air transportation passengers and property between the Northwest Arkansas Regional Airport (XNA) and the Springdale Northern Bypass (Hwy. 612). The project is estimated to be approximately 4 miles long.

Alternatives

The following alignment alternatives will be considered and evaluated.

- No build
- One alternative on new location
- One alternative on partial new location
- One alternative that improves existing Highways 112 and 264

Public Meeting Purpose

The project team has developed various alternatives to connect the Northwest Arkansas Regional Airport (XNA) and the Springdale Northern Bypass (Hwy. 612). We would like your input on which alternative would provide the best connectivity for the area.

We appreciate your involvement in this study and any comments or questions you provide on the materials and information presented at this public meeting. Comments may be submitted through Friday, December 20, 2019. There is also an online comment form available at XNAAccess.TransportationPlanRoom.com.

ARKANSAS DEPARTMENT OF TRANSPORTATION (ARDOT) CITIZEN COMMENT FORM

ARDOT JOB NUMBER 090069
NORTHWEST ARKANSAS REGIONAL AIRPORT (XNA) ACCESS
BENTON COUNTY

LOCATION:
Trinity Grace Church
5845 S. Bellview Road
Rogers, AR
4:00 – 7:00 p.m.
Thursday, December 5, 2019

Please provide your comments on this form and leave it with ARDOT or Garver personnel at the meeting or mail it by Friday, December 20, 2019 to: Nicolette Russell, Garver, 4701 Northshore Drive, North Little Rock, AR 72118. Alternatively, you can send in the form via e-mail to PublicInvolvement@GarverUSA.com or submit an online comment at XNAAccess.TransportationPlanRoom.com.

Yes☐**No**☐

Do you feel there is a need for improved connectivity between Hwy. 612 (Springdale Northern Bypass) and the Northwest Arkansas Regional Airport?

Yes☐**No**☐

Do you feel the proposed improvements will impact your property or community? _____

Which alternative do you prefer?

- ☐ No Build
- ☐ New location
- ☐ Partial new location
- ☐ Improve existing

(Continue on Back)

Do you have any suggestions to improve the proposed project or any of the alternatives shown at this meeting?

Do you know of any environmental issues in the immediate area of any of the proposed alternatives that should be considered as the project is developed? (Examples: cemeteries, springs, caves, endangered species, hazardous materials sites, existing or former landfills, or parks/public lands?)

Please make any additional comments here. _____

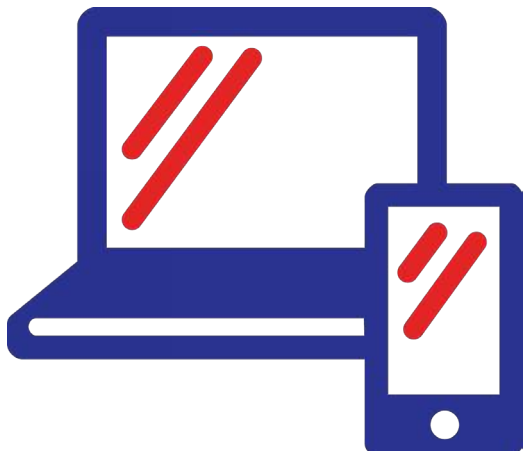
It is often necessary for the ARDOT to contact property owners along potential routes. If you are a property owner along or adjacent to the route under consideration, or if you would like to be notified of future public meetings related to this study, please provide information below. Thank you.

Name (*Please Print*): _____

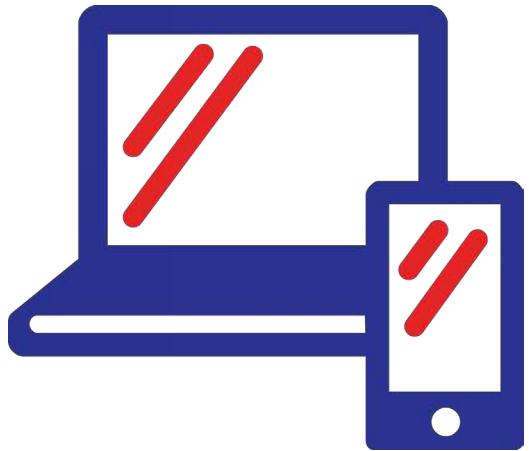
Address: _____ Phone: (____) ____--____

E-mail: _____

Thank you for taking the time to participate. For additional information, please visit www.ardot.gov or XNAAccess.TransportationPlanRoom.com.



XNAAccess.TransportationPlanRoom.com



XNAAccess.TransportationPlanRoom.com

**Submit Your
Comments
*Online!***



XNAAccess.TransportationPlanRoom.com

Submit your public meeting comments
online by ***Friday, December 20, 2019.***

A printed comment form is also available in your
meeting handouts and may be returned in the
comment box, via email, or by mail.



**Submit Your
Comments
*Online!***

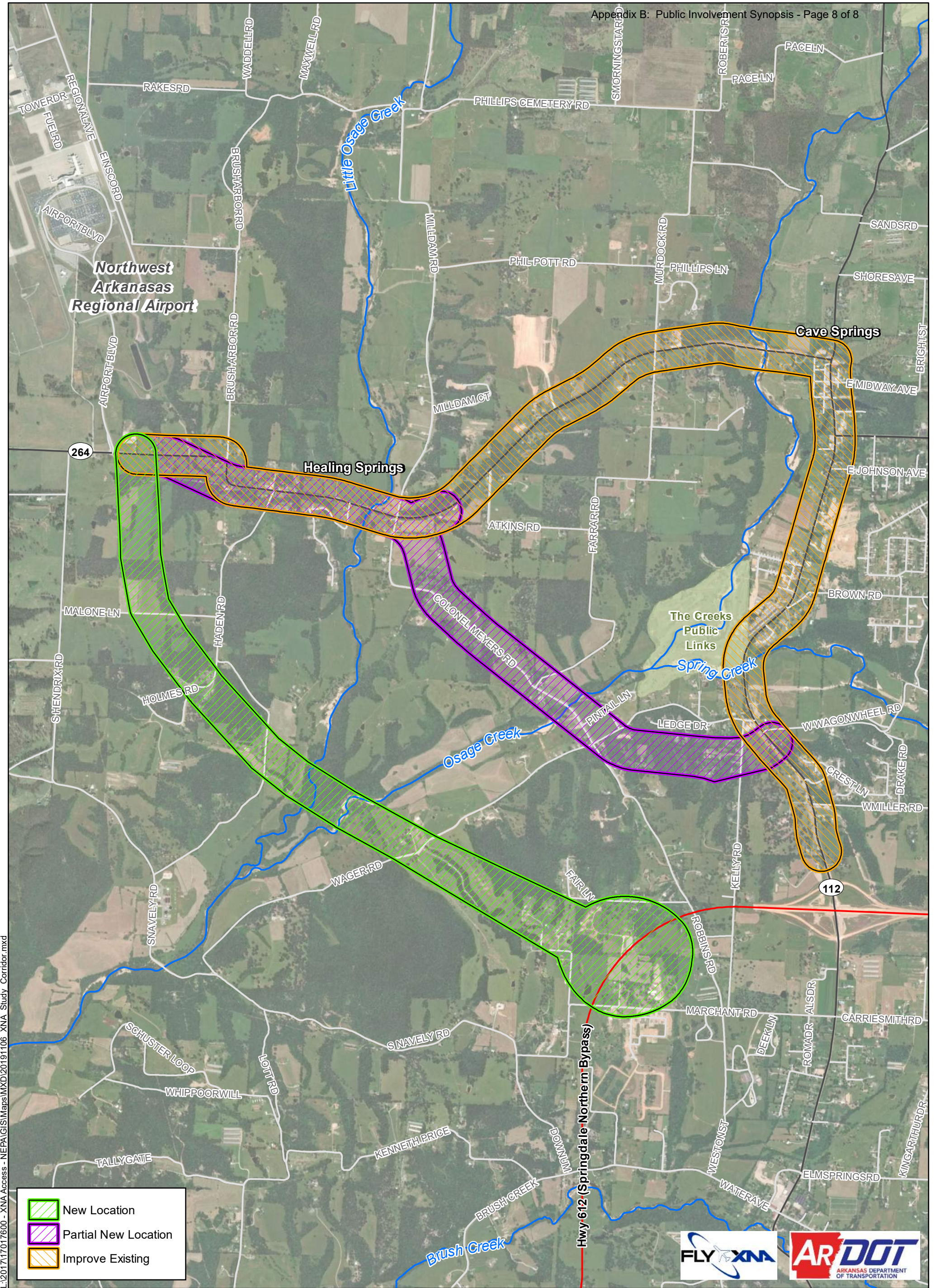


XNAAccess.TransportationPlanRoom.com

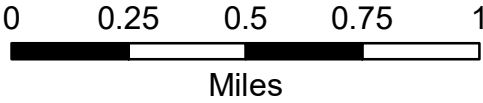
Submit your public meeting comments
online by ***Friday, December 20, 2019.***

A printed comment form is also available in your
meeting handouts and may be returned in the
comment box, via email, or by mail.





L:\2017\17017600 - XNA Access - NEPA\GIS\Maps\MXD\2019\1106 XNA Study Corridor.mxd



Northwest Arkansas Regional Airport Access
Benton County, Arkansas

Preliminary Study Corridor Map
DRAFT - SUBJECT TO CHANGE
November 6, 2019