



# **WELCOME**

**Virtual Location  
Public Hearing  
for the  
Northwest Arkansas National  
Airport (XNA) Access  
Benton County**

**Job Number 090069  
January 31 – March 17, 2021**

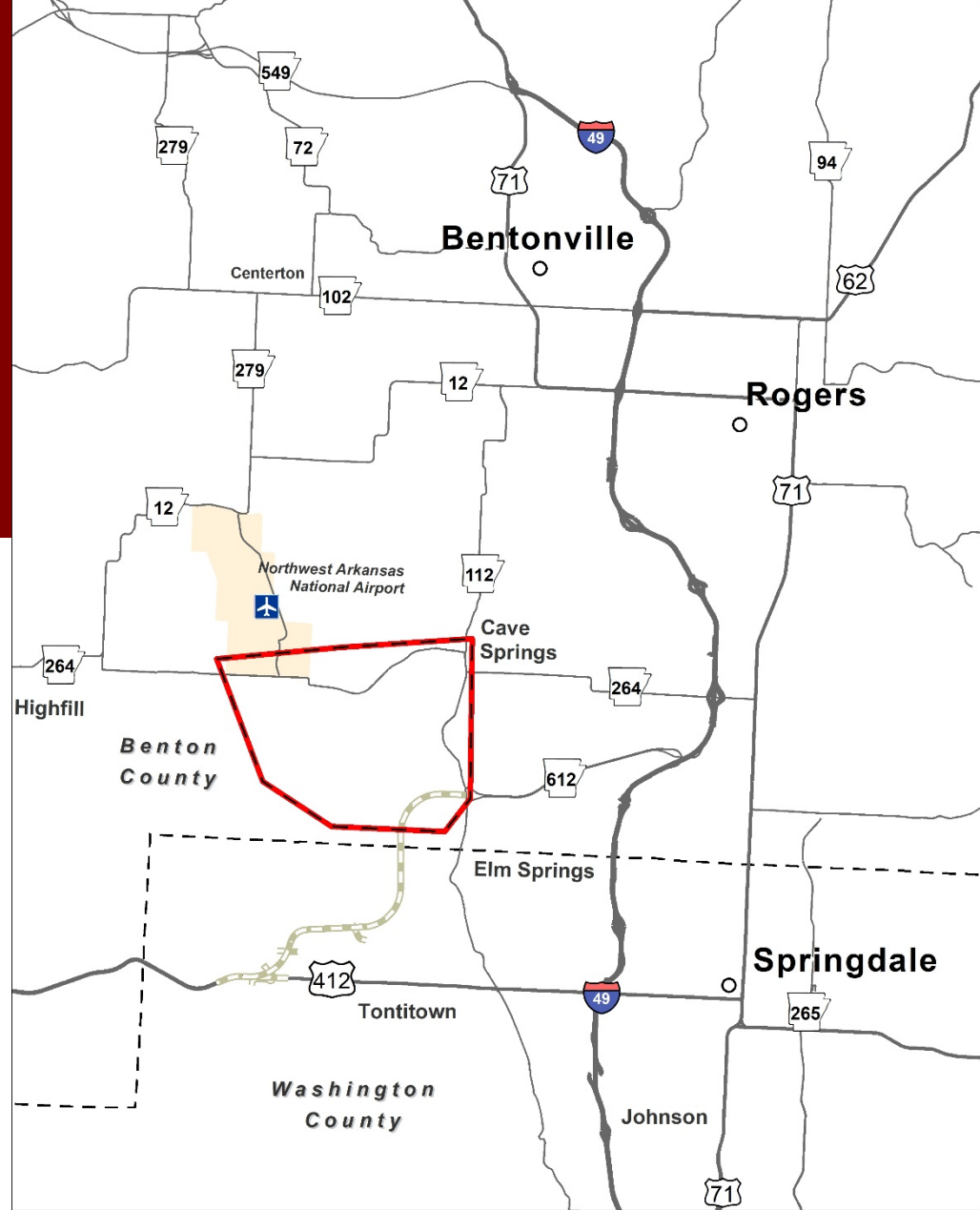


# Virtual Location Public Hearing Agenda

- **XNA Access Overview**
- **LIVE online presentation and opportunity to ask questions and make comments with project staff**
  - **March 2, 2021 from 5:30 p.m. – 6:30 p.m.**
  - **Q&A Forum:**  
[XNAAccess.transportationplanroom.com](https://XNAAccess.transportationplanroom.com)
- **Comment Form and Additional Resources**

# XNA Access Road Project Overview

The purpose of the proposed project is to provide a highway connection for the reliable and efficient movement of air transportation passengers and property between the Northwest Arkansas National Airport (XNA) and the Springdale Northern Bypass (SNB).




Northwest Arkansas  
National Airport Access Road  
Benton County, Arkansas

0 1 2  
Miles



 Study Area

 Future Springdale Northern  
Bypass (Hwy 612)

Project Location  
Map



# Environmental Assessment

*ARDOT Job 090069*

## NORTHWEST ARKANSAS NATIONAL AIRPORT ACCESS

### Environmental Assessment



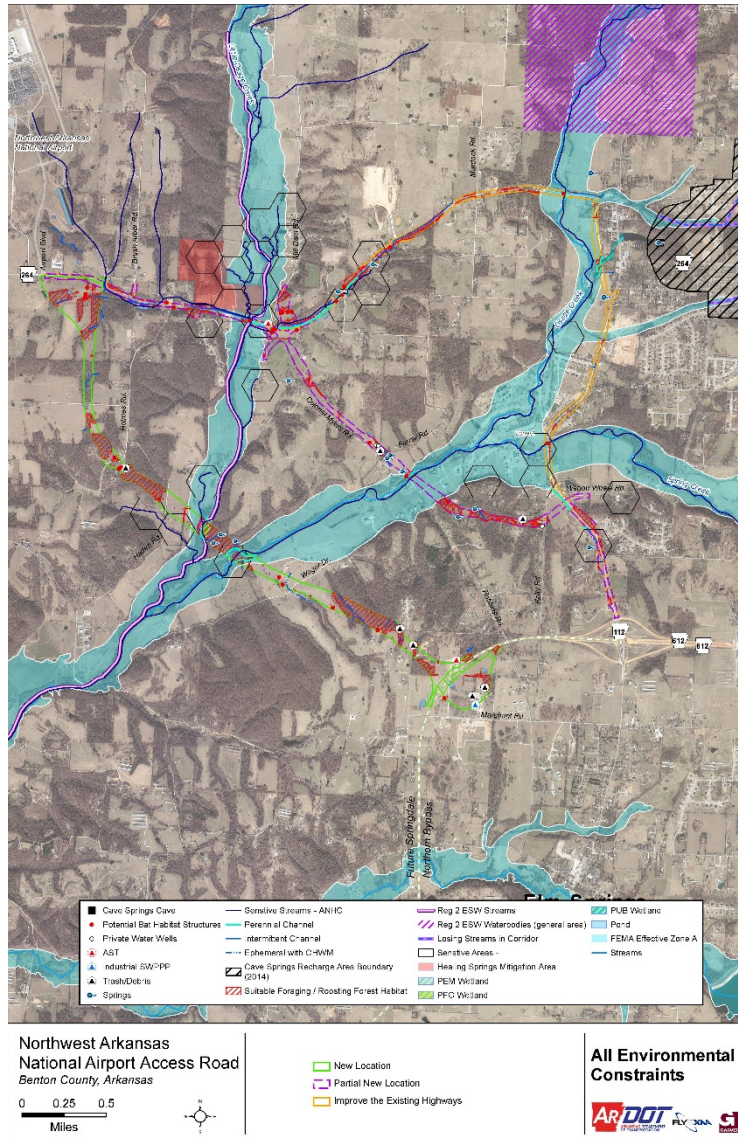
January 2021

## **This EA contains the project's:**

- Purpose and need
- Preliminary design
- Alternative analysis
- Public outreach
- Local officials and agency coordination
- Environmental studies
- Results and recommendations



# Environmental Studies



## Environmental resources considered include:

- Cultural resources
- Wetlands
- Floodplains
- Wildlife and habitats
- Endangered species
- Homes and businesses
- Hazardous materials
- Public lands
- Communities
- Water quality
- Karst
- Land use

# XNA Access Alternative Alignments

The four evaluated alternatives include:

- **No Action**
- **New Location**
- **Partial New Location**
- **Improve Existing Highways**

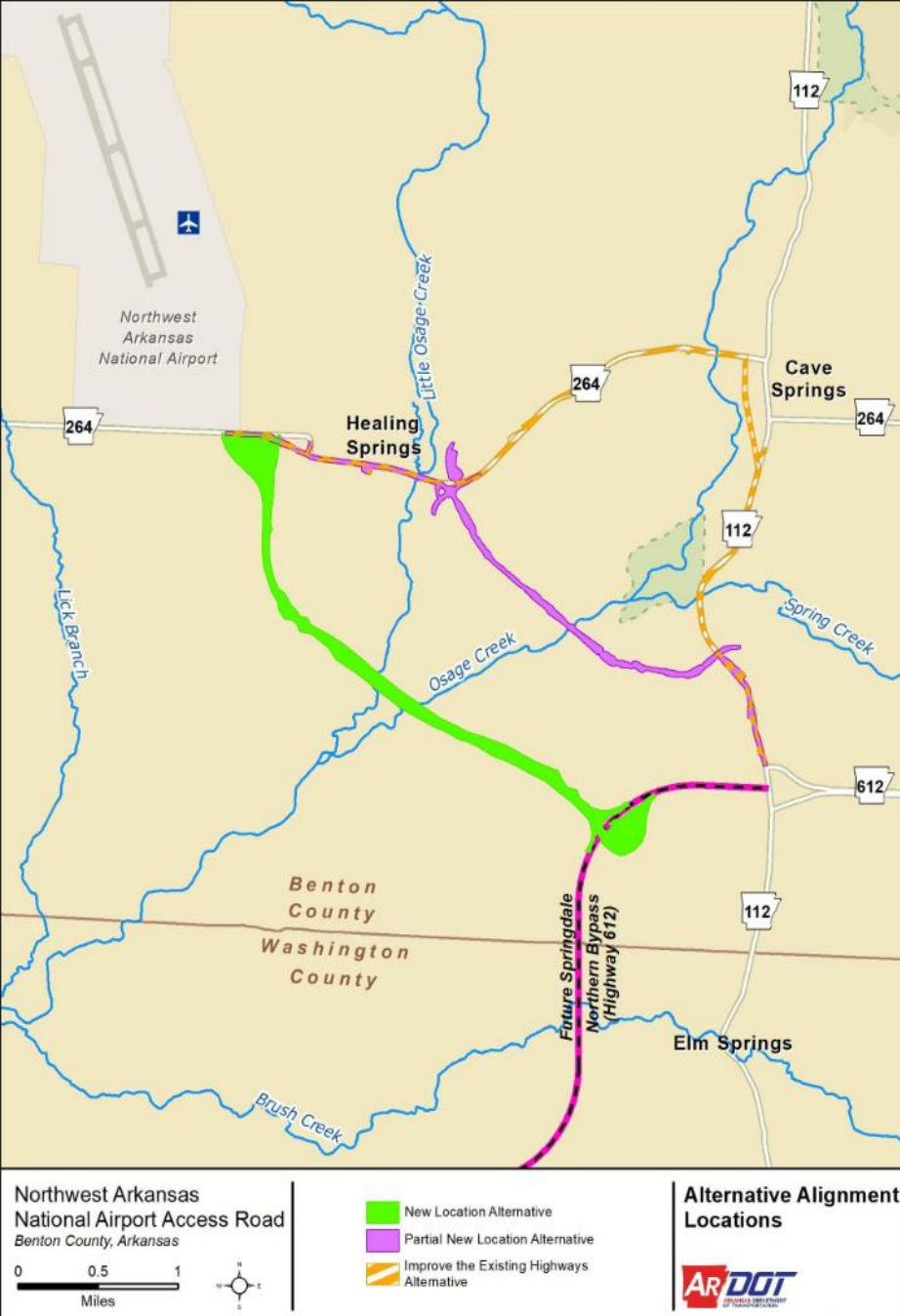


Figure 2: Alternative Alignment Locations



# Preferred Alternative: New Location Alternative

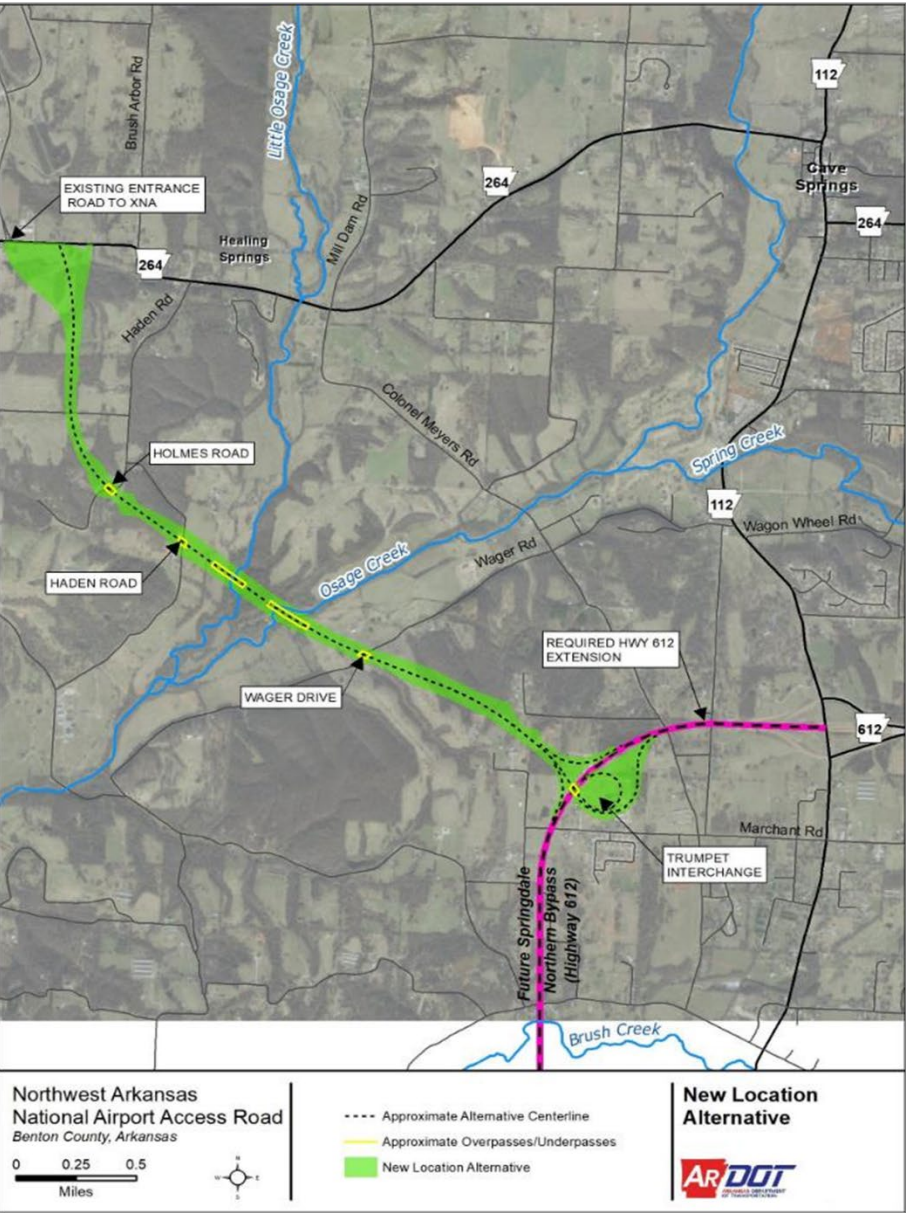


Figure 3: New Location Alternative

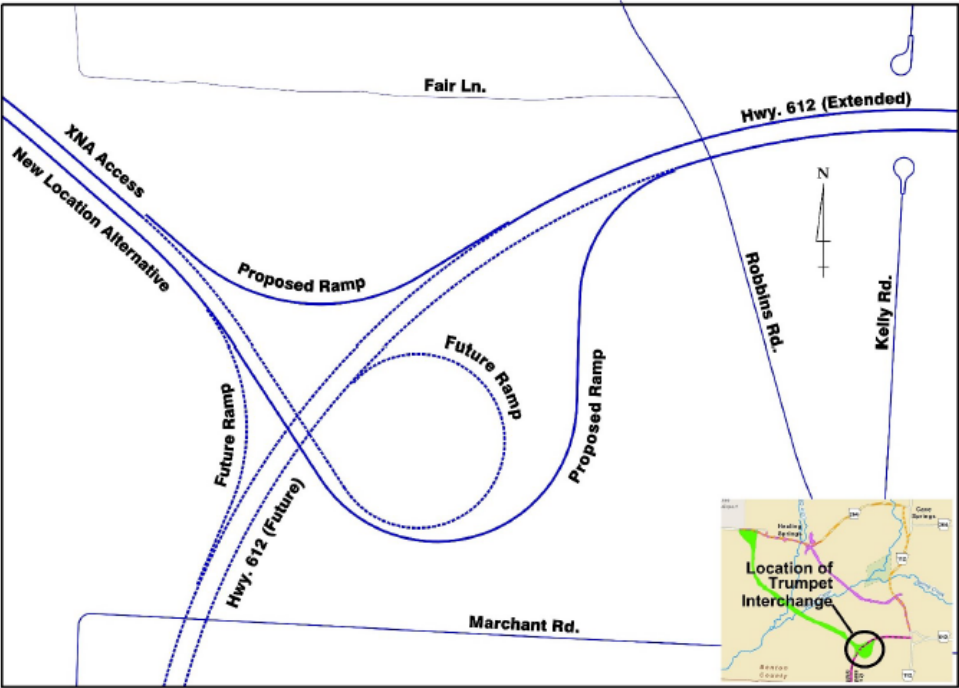


Figure 4: Trumpet Interchange Location

# What will the roadway look like?

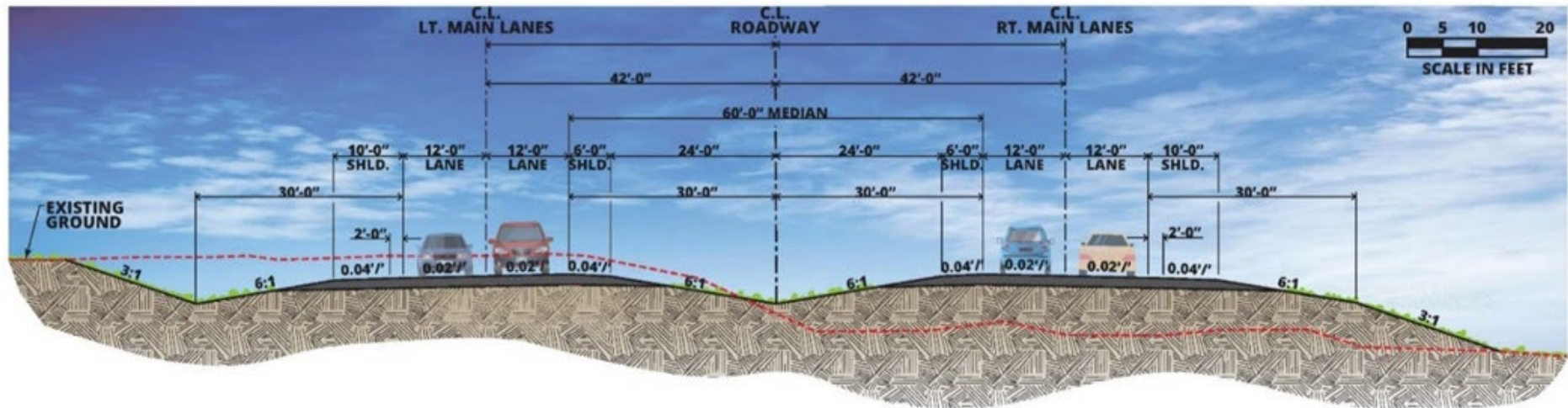


Figure 5: Typical Section

**XNA ACCESS TYPICAL DIVIDED HIGHWAY SECTION**  
**NEW LOCATION ALTERNATIVE**



# **LIVE Interactive Q&A Session**

**Tuesday, March 2, 2021  
5:30 p.m. – 6:30 p.m.**

**Comment Forms will be accepted until Friday, March 17, 2021  
[XNAAccess.transportationplanroom.com](https://XNAAccess.transportationplanroom.com)**

## **Contact us:**

**Garver Public Involvement  
501-823-0730**

**[PublicInvolvement@Garverusa.com](mailto:PublicInvolvement@Garverusa.com)**

**Mail: Garver, Attn: Lindi Miller, 4701 Northshore Drive  
North Little Rock, AR 72118**

# ***Thank you for attending!***

## **Notice of Nondiscrimination**

The Arkansas Department of Transportation (Department) complies with all civil rights provisions of federal statutes and related authorities that prohibit discrimination in programs and activities receiving federal financial assistance. Therefore, the Department does not discriminate on the basis of race, sex, color, age, national origin, religion (not applicable as a protected group under the Federal Motor Carrier Safety Administration Title VI Program), disability, Limited English Proficiency (LEP), or low-income status in the admission, access to and treatment in the Department's programs and activities, as well as the Department's hiring or employment practices. Complaints of alleged discrimination and inquiries regarding the Department's nondiscrimination policies may be directed to Joanna P. McFadden Section Head - EEO/DBE (ADA/504/Title VI Coordinator), P. O. Box 2261, Little Rock, AR 72203, (501)569- 2298, (Voice/TTY 711), or the following email address: [joanna.mcfadden@ardot.gov](mailto:joanna.mcfadden@ardot.gov)

Free language assistance for Limited English Proficient individuals is available upon request.

This notice is available from the ADA/504/Title VI Coordinator in large print, on audiotape and in Braille.